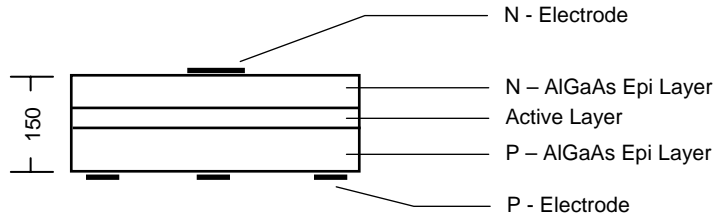
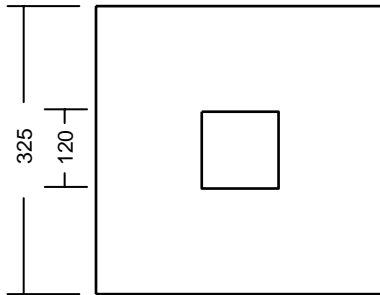


TCS680



- ❖ Features:
AlGaAs (DHS) / AlGaAs- substrate removed

- ❖ Outline Dimensions:



- ❖ Physical Structure:

Chip dimensions		Chip size	13 mil x 13 mil	325 μm x 325 μm
		Thickness	6 mil	150 μm
		Bonding Pad	4.7 mil	120 μm
Electrode	Top	N (cathode)	Gold alloy	
	Backside	P (anode)	Gold alloy	

- ❖ Electro-Optical Characteristics:

Parameter	Symbol	Condition	Min.	Typ.	Max.	Unit
Forward Voltage	V_F	$I_F = 20\text{mA}$	-	1.90	2.30	V
Reverse Voltage	V_R	$I_R = 10\mu\text{A}$	5	-	-	V
Wavelength*	λ_P	$I_F = 20\text{mA}$	672	680	688	nm
Output Power	P_O	$I_F = 20\text{mA}$	1.0	1.5	-	mW
Switching time	t_r / t_f	$I_F = 20\text{mA}$	-	40	-	ns