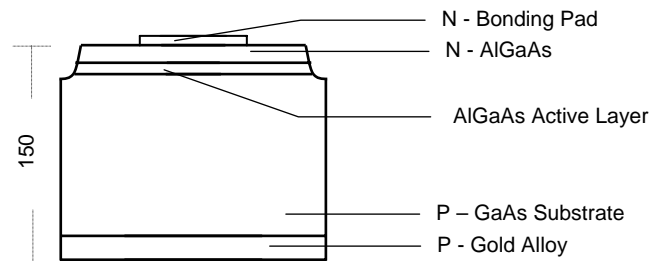
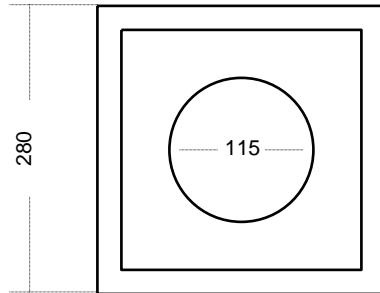


# TCD661

## ❖ Outline Dimensions:

Unit:  $\mu\text{m}$



## ❖ Physical Structure:

Chip dimensions	Chip size	12 mil x 12 mil	280 $\mu\text{m}$ x 280 $\mu\text{m}$
	Thickness	6 mil	150 $\mu\text{m}$
	Bonding pad	4.5 mil	115 $\mu\text{m}$

## ❖ Electro-Optical Characteristics:

Parameter	Symbol	Condition	Min.	Typ.	Max.	Unit
Forward Voltage	$V_F$	$I_F = 20\text{mA}$	-	1.80	2.00	V
Reverse Voltage	$V_R$	$I_R = 10\mu\text{A}$	5	-	-	V
Peak Wavelength	$\lambda_P$	$I_F = 20\text{mA}$	640	655	670	nm
Spectral Bandwidth	$\Delta\lambda$	$I_F = 20\text{mA}$	-	30	-	nm
Luminous Intensity	$I_V$	$I_F = 20\text{mA}$	-	35	-	mcd